



**DURHAM CATHOLIC  
DISTRICT SCHOOL BOARD**  
*Learning and Living in Faith*

# **Brooklin French Immersion Study**

## **Public Meeting 1**

February 20, 2020

St. Leo Catholic School

7:00 – 9:00 p.m.



**Rooted in Faith**  
Excellence | Equity | Engagement



**DURHAM CATHOLIC  
DISTRICT SCHOOL BOARD**  
*Learning and Living in Faith*



**Rooted in Faith**  
Excellence | Equity | Engagement



**DURHAM CATHOLIC  
DISTRICT SCHOOL BOARD**  
*Learning and Living in Faith*

# Welcome

- Housekeeping
- Comment card to fill in – to be collected at the end of the meeting





**DURHAM CATHOLIC  
DISTRICT SCHOOL BOARD**  
*Learning and Living in Faith*

# Land Acknowledgement

We here in the Durham Region respectfully acknowledge that we are on the traditional lands of the Mississaugas of Scugog Island.



**Rooted in Faith**  
Excellence | Equity | Engagement



**DURHAM CATHOLIC  
DISTRICT SCHOOL BOARD**  
*Learning and Living in Faith*

# Opening Prayer

Father,

We thank you for bringing us together as a community, and Your purpose for it. We know that when we gather together, You always have a divine agenda. Our prayer today is that Your will be done through this meeting.

Take what we have prepared and multiply our efforts as only You can. Steer our intentions to align with Your righteous will. Remind us of Your faithful provision when our efforts fail us or fall short.

Blanket us with Your peace today, Father. Keep our hearts and minds from pride and selfishness. Keep love at the forefront of our minds today, and the guiding light for all we set out to accomplish.

Amen.



**Rooted in Faith**  
Excellence | Equity | Engagement



# Agenda

1. Welcome
2. Land Acknowledgement | Opening Prayer
3. Committee Mandate | Trustee Mandate
4. Introduction of Committee Members
5. Meeting Dates and Locations | Meeting Norms
6. French Immersion Program
7. Background Information
8. Future Meeting Content
9. Questions and Discussion (1 hour)
10. Communication Protocol
11. Closing Prayer





# Committee Mandate

The Board of Trustees approved the following on January 27, 2020:

- approved the formation of a Brooklin French Study Committee as outlined in the report dated January 27, 2020
- requested the Committee to prepare a report recommending a preferred option by June 2020





# Committee Mandate

The task of the Committee is to:

- Review all available data and previous FI reports
- Review all of the potential solutions to address the French Immersion (FI) programs at St. Leo CS and St. John Paul II CS,
- Recommend a preferred option for the consolidation of the two existing FI programs.
- Recommended a method to implement the preferred alternative







**DURHAM CATHOLIC  
DISTRICT SCHOOL BOARD**  
*Learning and Living in Faith*

# Trustee Mandate

The decision regarding the proposal to ensure long-term sustainability of French Immersion programming and the method that will be used to implement the final recommendations rests with the Board of Trustees.

The Board will receive monthly updates between February and June.



**Rooted in Faith**  
Excellence | Equity | Engagement



**DURHAM CATHOLIC  
DISTRICT SCHOOL BOARD**  
*Learning and Living in Faith*

# Committee Members

- Susie Lee-Fernandes, Superintendent of Education (Chair)
- Scott Grieve, Superintendent of Facilities Services
- Ryan Putnam, Superintendent of Business
- Rosemary Leclair, Superintendent of Education
- Lewis Morgulis, Manager of Planning, Admissions and Capital
- Jackie McVeigh, Manager of Human Resources
- Kelly Mechoulan, Manager of Durham Student Transportation Services
- David Malleau, Principal St. Leo Catholic School
- Stephanie Richard, Principal St. John Paul II Catholic School
- James Tremblay, Principal St. Bridget Catholic School



**Rooted in Faith**  
Excellence | Equity | Engagement



**DURHAM CATHOLIC  
DISTRICT SCHOOL BOARD**  
*Learning and Living in Faith*

# Committee Members

- Carol Caputo, French language Consultant
- Jennifer Bastarache, Communications Manager
- Luetasha Watkins, Manager Early Learning and Childcare
- Jody Dale, Assistant Planner

## **Catholic School Council Chairs**

- Christina Melick & Pina Brannigan, St. Bridget CS
- Lee-Ann McAllister, St. John Paul II CS
- Cindy Boyd, St. Leo CS



**Rooted in Faith**  
Excellence | Equity | Engagement



**DURHAM CATHOLIC  
DISTRICT SCHOOL BOARD**  
*Learning and Living in Faith*

# Committee Members

## **Ontario Elementary Catholic Teachers Association (OECTA)**

- Linda McNeil, St. Bridget CS
- Shelly Roach & Kim Boyer-Miller, St. John Paul II CS
- Jane Lacey, St. Leo CS

## **Canadian Union of Public Employees (CUPE)**

- Bethany Summers, St. Bridget CS
- Tim Brooks, St. John Paul II CS

## **Elementary Teachers Federation of Ontario (ETFO)**

- Kelly Mulville, DECE Representative



**Rooted in Faith**  
Excellence | Equity | Engagement



**DURHAM CATHOLIC  
DISTRICT SCHOOL BOARD**  
*Learning and Living in Faith*

# Committee Members

## Childcare Partners (YMCA)

- Leanne Morton, General Manager, Family Supports - St. Bridget CS
- Jackie Smith, District Manager - St. John Paul II CS
- Lynn Brennan, General Manager, Child and Family Development - St. Leo CS



**Rooted in Faith**  
Excellence | Equity | Engagement



**DURHAM CATHOLIC  
DISTRICT SCHOOL BOARD**  
*Learning and Living in Faith*

# Meeting Dates & Locations

The January 27 report included a series of committee meetings and public meetings that will be used to review the data and receive input on a recommended option



**Rooted in Faith**  
Excellence | Equity | Engagement



# Meeting Dates & Locations

## Committee Meetings

Thursday February 13	1:30pm to 3 pm	Pope Francis Centre (652 Rossland Road)
Thursday February 20	1pm to 3 pm	Pope Francis Centre (652 Rossland Road)
Thursday March 12	1pm to 3 pm	South Boardroom (650 Rossland Road)
Thursday April 2	1pm to 3 pm	South Boardroom (650 Rossland Road)
Thursday April 16	9 am to 11 am	South Boardroom (650 Rossland Road)

## Public Meetings

Thursday February 20	7 pm to 9 pm	St. Leo CS Gym (120 Watford Street)
Thursday April 2	7 pm to 9 pm	St. John Paul II CS Gym (160 Cachet Blvd)
Thursday April 23	7 pm to 9 pm	St. Bridget CS Gym (200 Carnwith Ave)





# Meeting Norms

Meetings will:

- present a clear agenda at the beginning of the meeting
- start on time and respect the time limitations that have been established
- allow opportunities for participants to speak
- record all questions at the meeting to be added to a frequently asked questions (Frequently Asked Questions - FAQs) list
- release a meeting summary/debrief after the meeting







# Meeting Norms (cont'd)

Meetings will:

- be open to all members of the Brooklin Catholic school communities
- demonstrate transparency, accountability and accessibility in the eyes of the public
- provide the public with a means to gain an understanding of the study summary
- enable respectful interactions with the committee members and the public
- be conducted in a manner that reflects the goals, values and vision of the Board





# Meeting Norms (cont'd)

The following norms should be followed with respect to each meeting:

- Be present to oneself and others to listen to the voice of the Holy Spirit and to each other
- Be non-judgmental and allow us to see the gift of different opinions and points of view
- Ask open and honest questions to deepen our own understanding and allow others to reach their own conclusions and decisions





## **Renewing the Vision – 2019-2022 Strategic Plan Commitments:**

- **Excellence:** Learning about and using current, research-based best practices
- **Equity:** Providing access to a broad range of programs, pathways and vocations
- **Engagement:** Ensuring transparent decision-making processes

## **Strategic Priority - Managing Resources:**

- To ensure allocation of resources that reflects the principles of equity and financial stewardship





**DURHAM CATHOLIC  
DISTRICT SCHOOL BOARD**  
*Learning and Living in Faith*

# French Immersion Program



**Rooted in Faith**  
Excellence | Equity | Engagement



## Vision and Goals for FSL Programs in Ontario

Students in English Language school boards have the confidence and the ability to use French effectively in their daily lives.

- Goal 1: Increase student confidence, proficiency and achievement in FSL
- Goal 2: Increase the percentage of students studying FSL until Gr. 12
- Goal 3: Increase student, educator, parent, and community engagement in FSL





**DURHAM CATHOLIC  
DISTRICT SCHOOL BOARD**  
*Learning and Living in Faith*

# French Immersion Program

Grade 1 French Immersion – began at Durham Catholic DSB in September 2010

- Currently being offered in 13 elementary schools across all municipalities
- Program is designed for non-francophone students
- Curriculum follows the guidelines of the Ontario Ministry of Education
- Initial focus is on building oral proficiency – speaking and listening skills



**Rooted in Faith**  
Excellence | Equity | Engagement



# French Immersion Program

	Grade One	Grade Two	Grade Three	Grade Four	Grade Five	Grade Six	Grade Seven	Grade Eight
French	90 %	90%	90%	50%	50%	50%	50%	50%
English	10%	10%	10%	50%	50%	50%	50%	50%

- Religious Education & Family Life: taught in English in Grades 1-3
- Religion and Family Life, English Language Arts, Math: taught in English in Grades 4-8
- EQAO: Grade 3 – Students **only** complete Math section in French
- Grade 6 – Students complete all sections in English





**DURHAM CATHOLIC  
DISTRICT SCHOOL BOARD**  
*Learning and Living in Faith*

# Background Information



**Rooted in Faith**  
Excellence | Equity | Engagement





# HISTORICAL FRENCH IMMERSION DATA

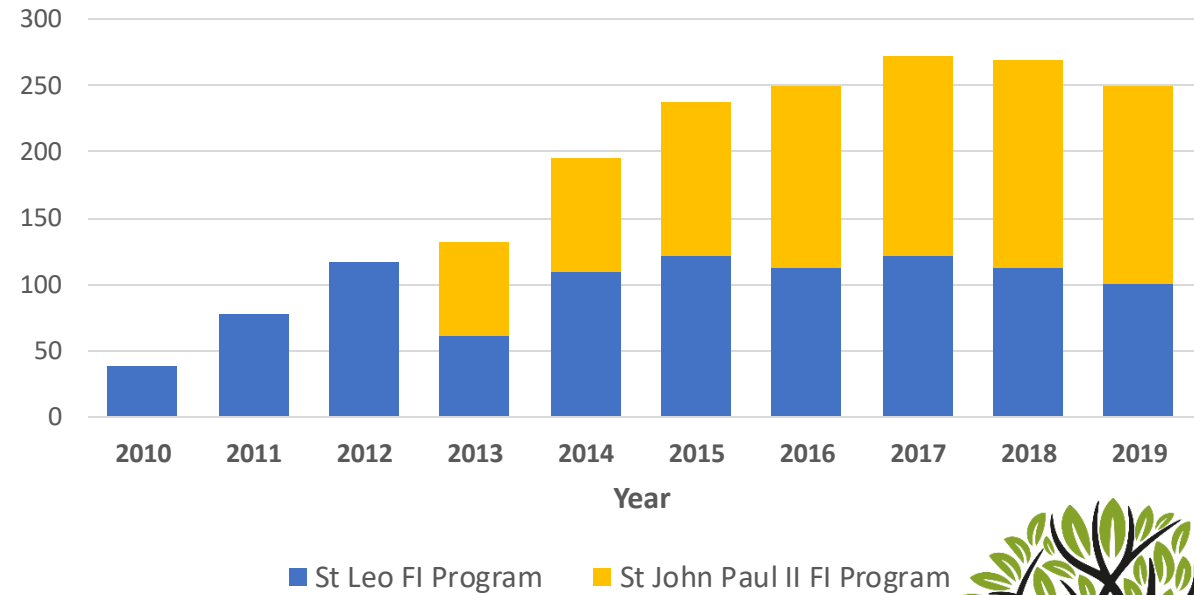
## St. Leo CS Historical FI Enrolment

Year	Gr1	Gr2	Gr3	Gr4	Gr5	Gr6	Gr7	Gr8	Total
2010	38	0	0	0	0	0	0	0	38
2011	45	33	0	0	0	0	0	0	78
2012	45	41	31	0	0	0	0	0	117
2013	19	14	11	17	0	0	0	0	61
2014	24	20	27	22	17	0	0	0	110
2015	19	22	14	27	22	17	0	0	121
2016	11	15	20	11	24	22	10	0	113
2017	13	14	12	21	11	22	21	8	122
2018	9	11	14	11	20	11	17	19	112
2019	11	9	9	12	12	20	9	18	100

## St. John Paul II CS Historical FI Enrolment

Year	Gr1	Gr2	Gr3	Gr4	Gr5	Gr6	Gr7	Gr8	Total
2013	24	16	18	13	0	0	0	0	71
2014	18	22	15	17	13	0	0	0	85
2015	31	14	22	14	19	16	0	0	116
2016	26	29	13	22	13	19	15	0	137
2017	20	25	27	14	23	11	17	14	151
2018	24	17	24	29	15	25	8	15	157
2019	14	21	15	26	28	15	25	6	150

Historical French Immersion Enrolment  
 St. Leo CS and St. John Paul II Cs



*This excludes enrolment from the EF program*



## HISTORICAL ENROLMENT DATA

### St. Leo CS Historical FI Enrolment

Year	Gr1	Gr2	Gr3	Gr4	Gr5	Gr6	Gr7	Gr8	Total
2010	38	0	0	0	0	0	0	0	38
2011	45	33	0	0	0	0	0	0	78
2012	45	41	31	0	0	0	0	0	117
2013	19	14	11	17	0	0	0	0	61
2014	24	20	27	22	17	0	0	0	110
2015	19	22	14	27	22	17	0	0	121
2016	11	15	20	11	24	22	10	0	113
2017	13	14	12	21	11	22	21	8	122
2018	9	11	14	11	20	11	17	19	112
2019	11	9	9	12	12	20	9	18	100

Retention data looks at students moving from one grade to the next.

- For the 2013 Grade 1 class 19 students started in Grade 1
- By 2019 only 9 of those students remained in Grade 7
- The retention rate from grade to grade is also called the demission rate
- Students may leave the program for many reasons including:
  - Transfer out of an FI program to an RT program,
  - Relocation to another FI program at a different school,
  - Relocation to a school in another Board,





**St. Leo CS Historical Retention**

Year	Gr1	Gr2	Gr3	Gr4	Gr5	Gr6	Gr7	Gr8	Total
2014		105%	193%	200%	100%				150%
2015		92%	70%	100%	100%	100%			92%
2016		79%	91%	79%	89%	100%	59%		83%
2017		127%	80%	105%	100%	92%	95%	80%	97%
2018		85%	100%	92%	95%	100%	77%	90%	91%
2019		100%	82%	86%	109%	100%	82%	106%	95%

3-year Avg	104%	87%	94%	101%	97%	85%	92%	94%
5-year Avg	97%	85%	92%	99%	98%	78%	92%	92%

**St. John Paul II CS Historical Retention**

Year	Gr1	Gr2	Gr3	Gr4	Gr5	Gr6	Gr7	Gr8	Total
2014		92%	94%	94%	100%				95%
2015		78%	100%	93%	112%	123%			101%
2016		94%	93%	100%	93%	100%	94%		96%
2017		96%	93%	108%	105%	85%	89%	93%	96%
2018		85%	96%	107%	107%	109%	73%	88%	95%
2019		88%	88%	108%	97%	100%	100%	75%	94%

3-year Average	90%	92%	108%	103%	98%	87%	86%	95%
5-year Average	88%	94%	103%	103%	103%	89%	86%	96%





# PROJECTED FRENCH IMMERSION DATA

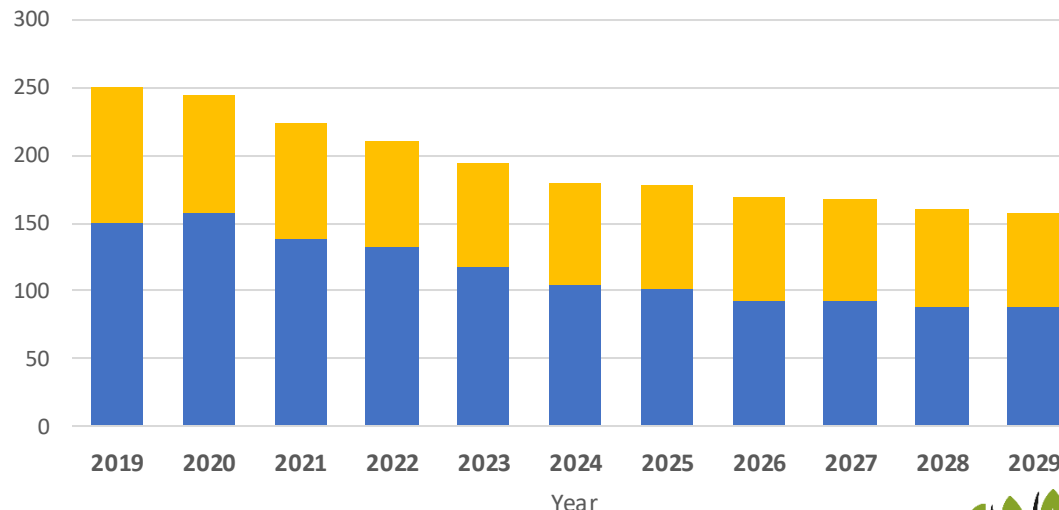
## St. Leo CS Projected FI Enrolment

Year	Gr1	Gr2	Gr3	Gr4	Gr5	Gr6	Gr7	Gr8	Total
2019	11	9	9	12	12	20	9	18	100
2020	14	11	8	8	11	12	15	8	88
2021	13	14	10	7	8	11	9	13	85
2022	13	13	13	9	7	8	9	8	78
2023	12	12	12	12	8	7	6	7	77
2024	12	12	11	11	11	8	5	5	76
2025	12	12	11	10	10	11	6	4	77
2026	10	12	11	10	10	10	8	5	76
2027	10	10	11	10	10	10	8	7	75
2028	10	10	9	9	9	9	7	6	72
2029	10	10	9	9	9	9	7	6	70

## St. John Paul II CS Projected FI Enrolment

Year	Gr1	Gr2	Gr3	Gr4	Gr5	Gr6	Gr7	Gr8	Total
2019	14	21	15	26	28	15	25	6	150
2020	19	13	20	15	26	27	13	24	157
2021	13	17	12	20	15	25	23	12	138
2022	13	12	16	12	20	15	22	22	132
2023	13	12	11	16	12	19	12	21	117
2024	13	12	11	11	16	12	16	12	104
2025	13	12	11	11	11	16	10	16	101
2026	13	12	11	11	11	11	14	10	93
2027	13	12	11	11	11	11	9	13	92
2028	13	12	11	11	11	11	9	9	88
2029	13	12	11	11	11	11	9	9	88

Projected French Immersion Students St. Leo CS and St. John Paul II CS



■ St. John Paul II CS    ■ St. Leo CS





## PROJECTED ENROLMENT DATA

<b>St. John Paul II</b>	<b>2019</b>	<b>2020</b>	<b>2021</b>	<b>2022</b>	<b>2023</b>	<b>2024</b>	<b>2025</b>	<b>2026</b>	<b>2027</b>	<b>2028</b>	<b>2029</b>
Regular Track	221	201	197	184	182	177	175	180	188	198	213
French Immersion	150	157	138	132	117	104	101	93	92	88	88
Total	371	358	336	316	299	281	276	273	280	286	301
<i>Capacity</i>	<i>458</i>	<i>458</i>	<i>458</i>	<i>458</i>	<i>458</i>	<i>458</i>	<i>458</i>	<i>458</i>	<i>458</i>	<i>458</i>	<i>458</i>
Utilization	81%	78%	73%	69%	65%	61%	60%	60%	61%	62%	66%

<b>St. Leo CS</b>	<b>2019</b>	<b>2020</b>	<b>2021</b>	<b>2022</b>	<b>2023</b>	<b>2024</b>	<b>2025</b>	<b>2026</b>	<b>2027</b>	<b>2028</b>	<b>2029</b>
Regular Track	121	115	112	106	104	105	106	113	117	128	138
French Immersion	100	88	85	78	77	76	77	76	75	72	70
Total	221	203	198	184	181	181	183	189	192	200	208
<i>Capacity</i>	<i>266</i>	<i>266</i>	<i>266</i>	<i>266</i>	<i>266</i>	<i>266</i>	<i>266</i>	<i>266</i>	<i>266</i>	<i>266</i>	<i>266</i>
Utilization	83%	76%	74%	69%	68%	68%	69%	71%	72%	75%	78%





**DURHAM CATHOLIC  
DISTRICT SCHOOL BOARD**  
*Learning and Living in Faith*

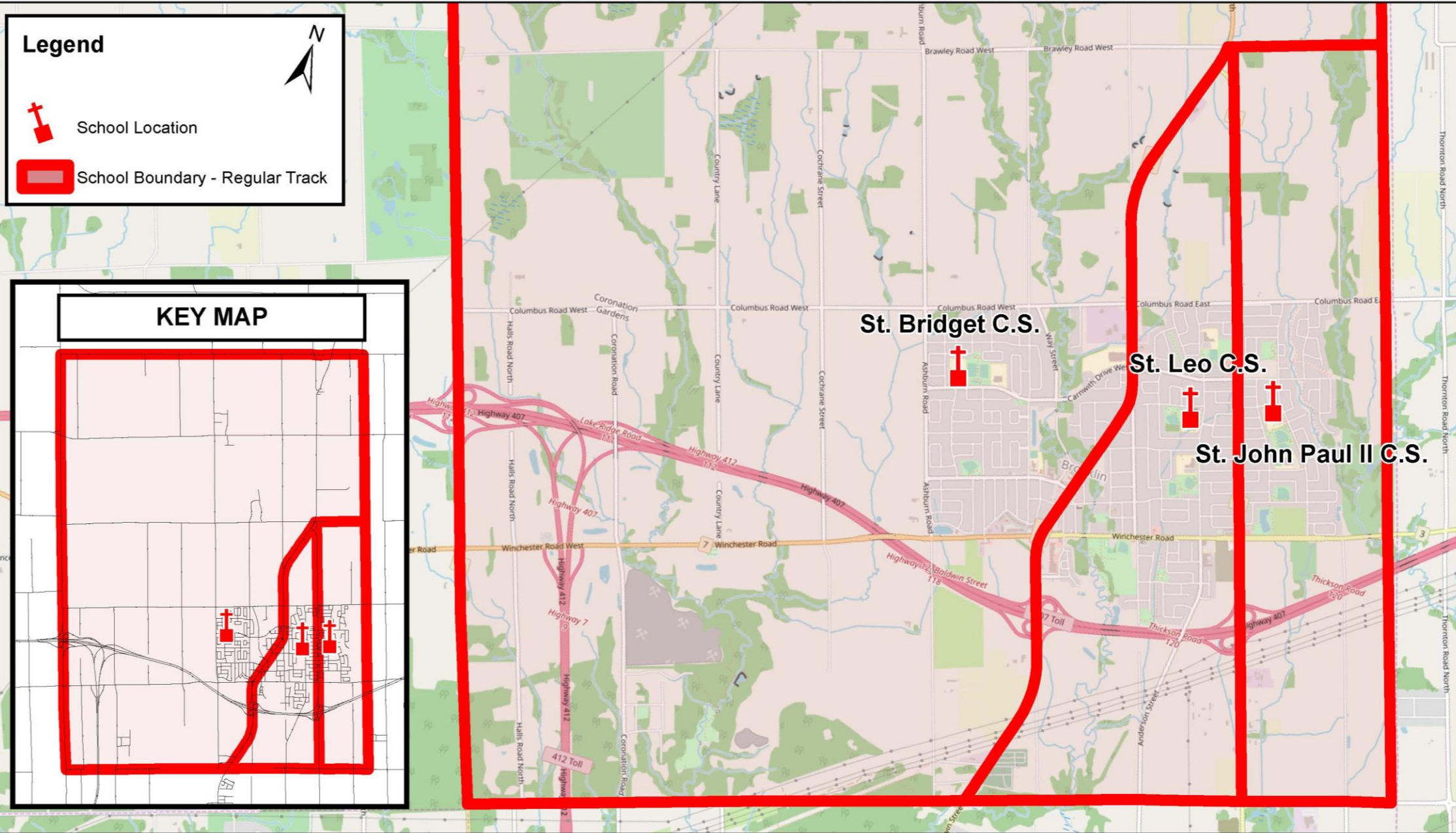
# Existing Boundaries



**Rooted in Faith**  
Excellence | Equity | Engagement






# DCDSB - Village of Brooklin Catholic Elementary Schools School Location and Regular Track Boundary Map



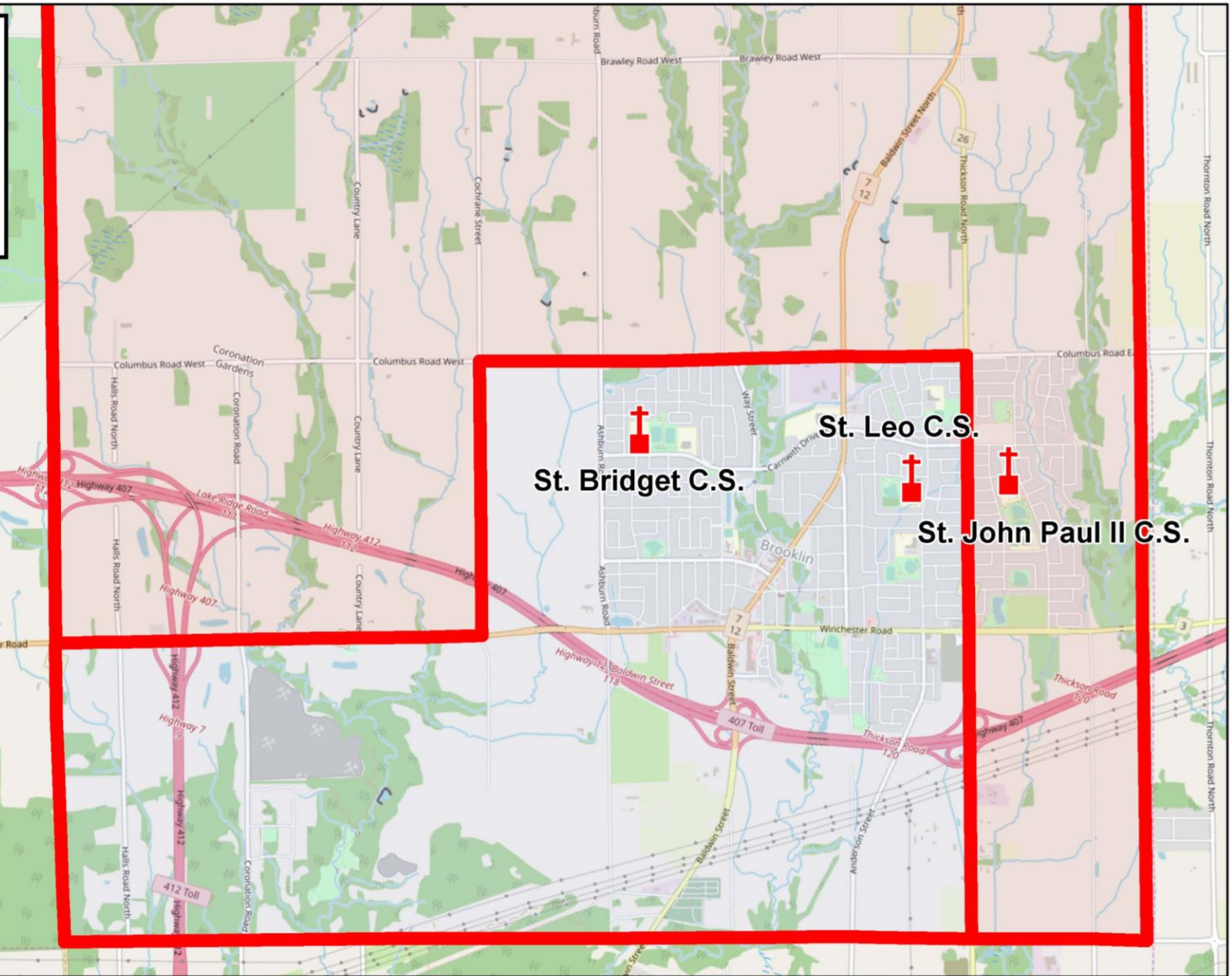
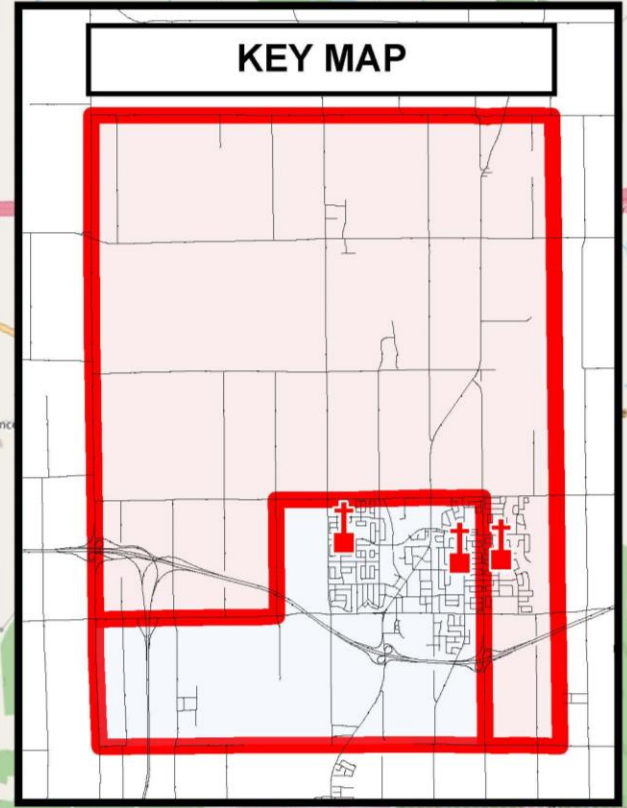


# DCDSB - Village of Brooklin Catholic Elementary Schools School Location and French Immersion Boundary Map

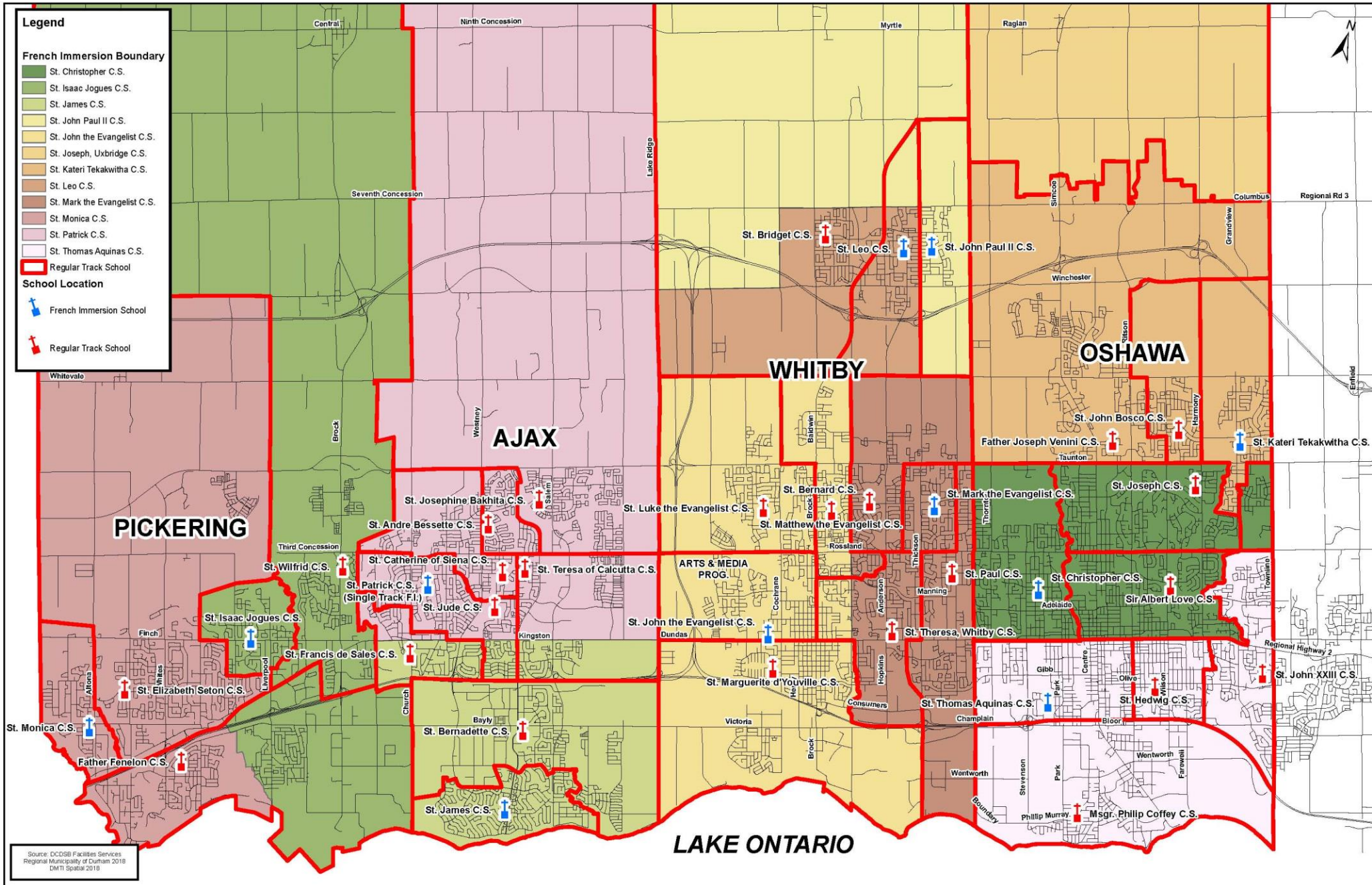
**Legend**

-  School Location
-  St. Leo C.S. French Immersion Boundary
-  St. John Paul II C.S. French Immersion Boundary

**KEY MAP**







Source: DCSB Facilities Services  
Regional Municipality of Durham 2018  
DM71: Spatial 2019





**DURHAM CATHOLIC  
DISTRICT SCHOOL BOARD**  
*Learning and Living in Faith*

# Staffing the Programs



**Rooted in Faith**  
Excellence | Equity | Engagement



Staffing an FI Program has several components:

- FI staffing has to respect the Primary Class Size (PCS) caps of 20:1 for Grades 1,2, and 3;
- Limited number of Primary classes can be at 23 (10% system wide or approximately 20 a year);
- Unlike English, cannot have Grade a 3 – 4 split due to % French Instruction;
- Overall average Junior/Intermediate class size must be no more than 24.5:1;
- If the Junior/Intermediate class size average is higher than 24.5:1 then additional classes may be formed.





# 2019 FI Staffing

## St. Leo CS 2019

	JK	SK	1	2	3	4	5	6	7	8	Total	
FI	1		11	5							16	
FI	1			4	9						13	
FI	1					12	12				24	
FI	1							20			20	
FI	1								9	18	27	
<b>Total</b>	<b>5</b>	<b>0</b>	<b>0</b>	<b>11</b>	<b>9</b>	<b>9</b>	<b>12</b>	<b>12</b>	<b>20</b>	<b>9</b>	<b>18</b>	<b>100</b>

- St Leo CS requires 5 classes
- Minimum class size is 13, maximum is 27
- 4 combined classes
- St John Paul II requires 7 classes
- Minimum class size is 14, maximum 28
- 3 combined classes

## St. John Paul II CS 2019

	JK	SK	1	2	3	4	5	6	7	8	Total	
FI	1		14								14	
FI	1			17							17	
FI	1			4	15						19	
FI	1					26					26	
FI	1						28				28	
FI	1							15	7		22	
FI	1								18	6	24	
<b>Total</b>	<b>7</b>	<b>0</b>	<b>0</b>	<b>14</b>	<b>21</b>	<b>15</b>	<b>26</b>	<b>28</b>	<b>15</b>	<b>25</b>	<b>6</b>	<b>150</b>







# 2020 FI Staffing

## St. Leo CS 2020

	JK	SK	1	2	3	4	5	6	7	8	Total	
FI	1		14								14	
FI	1			11	8						19	
FI	1					8	11				19	
FI	1							12	7		19	
FI	1								8	8	16	
<b>Total</b>	<b>5</b>	<b>0</b>	<b>0</b>	<b>14</b>	<b>11</b>	<b>8</b>	<b>8</b>	<b>11</b>	<b>12</b>	<b>15</b>	<b>8</b>	<b>87</b>

## St. John Paul II CS 2020

	JK	SK	1	2	3	4	5	6	7	8	Total	
FI	1		19								19	
FI	1			13							13	
FI	1				20						20	
FI	1					15	11				26	
FI	1						15	12			27	
FI	1							15	9		24	
FI	1								4	24	28	
<b>Total</b>	<b>7</b>	<b>0</b>	<b>0</b>	<b>19</b>	<b>13</b>	<b>20</b>	<b>15</b>	<b>26</b>	<b>27</b>	<b>13</b>	<b>24</b>	<b>157</b>

## Combined FI 2020

	JK	SK	1	2	3	4	5	6	7	8	Total	
FI	1		23								23	
FI	1		10	10							20	
FI	1			14	6						20	
FI	1				22						22	
FI	1					23					23	
FI	1						28				28	
FI	1						9	19			28	
FI	1							20	8		28	
FI	1								20	8	28	
FI	1									24	24	
<b>Total</b>	<b>10</b>	<b>0</b>	<b>0</b>	<b>33</b>	<b>24</b>	<b>28</b>	<b>23</b>	<b>37</b>	<b>39</b>	<b>28</b>	<b>32</b>	<b>244</b>

- 2 fewer classes organized
- 5 combined classes vs 8 combined classes
- Requires 2 PCS classes





# 2022 FI Staffing

## St. Leo CS 2022

	JK	SK	1	2	3	4	5	6	7	8	Total	
FI	1		13	7							20	
FI	1			6	13						19	
FI	1					9	7				16	
FI	1							8	9		17	
FI	1									8	8	
<b>Total</b>	<b>5</b>	<b>0</b>	<b>0</b>	<b>13</b>	<b>13</b>	<b>13</b>	<b>9</b>	<b>7</b>	<b>8</b>	<b>9</b>	<b>8</b>	<b>80</b>

## St. John Paul II CS 2022

	JK	SK	1	2	3	4	5	6	7	8	Total	
FI	1		13	7							20	
FI	1			5	16						21	
FI	1					12	11				23	
FI	1						9	15			24	
FI	1								22		22	
FI	1									22	22	
<b>Total</b>	<b>6</b>	<b>0</b>	<b>0</b>	<b>13</b>	<b>12</b>	<b>16</b>	<b>12</b>	<b>20</b>	<b>15</b>	<b>22</b>	<b>22</b>	<b>132</b>

## Combined FI 2022

	JK	SK	1	2	3	4	5	6	7	8	Total	
FI	1		20								20	
FI	1		6	14							20	
FI	1			11	9						20	
FI	1				20						20	
FI	1					21					21	
FI	1						27				27	
FI	1							23	6		29	
FI	1								25		25	
FI	1									30	30	
<b>Total</b>	<b>9</b>	<b>0</b>	<b>0</b>	<b>26</b>	<b>25</b>	<b>29</b>	<b>21</b>	<b>27</b>	<b>23</b>	<b>31</b>	<b>30</b>	<b>212</b>

- 2 fewer classes organized
- 3 combined classes vs 8 combined classes
- No PCS classes above 20





# 2024 FI Staffing

## St. Leo CS 2024

	JK	SK	1	2	3	4	5	6	7	8	Total	
FI	1		12	7							19	
FI	1			5	11						16	
FI	1					11	6				17	
FI	1						5	8			13	
FI	1								5	5	10	
<b>Total</b>	<b>5</b>	<b>0</b>	<b>0</b>	<b>12</b>	<b>12</b>	<b>11</b>	<b>11</b>	<b>11</b>	<b>8</b>	<b>5</b>	<b>5</b>	<b>75</b>

## St. John Paul II CS 2024

	JK	SK	1	2	3	4	5	6	7	8	Total	
FI	1		13	7							20	
FI	1			5	11						16	
FI	1					11	16				27	
FI	1							12	8		20	
FI	1								8	12	20	
<b>Total</b>	<b>5</b>	<b>0</b>	<b>0</b>	<b>13</b>	<b>12</b>	<b>11</b>	<b>11</b>	<b>16</b>	<b>12</b>	<b>16</b>	<b>12</b>	<b>103</b>

## Combined FI 2024

	JK	SK	1	2	3	4	5	6	7	8	Total	
FI	1		20								20	
FI	1		5	14							19	
FI	1			10	4						14	
FI	1				18						18	
FI	1					22					22	
FI	1						27				27	
FI	1							20	8		28	
FI	1								13	17	30	
<b>Total</b>	<b>8</b>	<b>0</b>	<b>0</b>	<b>25</b>	<b>24</b>	<b>22</b>	<b>22</b>	<b>27</b>	<b>20</b>	<b>21</b>	<b>17</b>	<b>178</b>

- 2 fewer classes organized
- 4 combined classes vs 10 combined classes
- No PCS classes above 20





# 2029 FI Staffing

## St. Leo CS 2029

	JK	SK	1	2	3	4	5	6	7	8	Total	
FI	1		10	10							20	
FI	1				9						9	
FI	1					9	9				18	
FI	1							9			9	
FI	1								7	6	13	
<b>Total</b>	<b>5</b>	<b>0</b>	<b>0</b>	<b>10</b>	<b>10</b>	<b>9</b>	<b>9</b>	<b>9</b>	<b>9</b>	<b>7</b>	<b>6</b>	<b>69</b>

## St. John Paul II CS 2029

	JK	SK	1	2	3	4	5	6	7	8	Total	
FI	1		13	7							20	
FI	1			5	11						16	
FI	1					11	11				22	
FI	1							11	9		20	
FI	1									9	9	
<b>Total</b>	<b>5</b>	<b>0</b>	<b>0</b>	<b>13</b>	<b>12</b>	<b>11</b>	<b>11</b>	<b>11</b>	<b>11</b>	<b>9</b>	<b>9</b>	<b>87</b>

## Combined FI 2029

	JK	SK	1	2	3	4	5	6	7	8	Total	
FI	1		23								23	
FI	1			22							22	
FI	1				20						20	
FI	1					20					20	
FI	1						20				20	
FI	1							20	6		26	
FI	1								10	15	25	
<b>Total</b>	<b>7</b>	<b>0</b>	<b>0</b>	<b>23</b>	<b>22</b>	<b>20</b>	<b>20</b>	<b>20</b>	<b>20</b>	<b>16</b>	<b>15</b>	<b>156</b>

- 3 fewer classes organized (7 vs 10)
- 3 combined classes vs 7 combined classes
- 2 PCS classes







**DURHAM CATHOLIC  
DISTRICT SCHOOL BOARD**  
*Learning and Living in Faith*

# Student Transportation



**Rooted in Faith**  
Excellence | Equity | Engagement



# Student Transportation

- Schools are only 1.3 km apart so about a 3-5 min drive distance
- For now the assumption would be any students moving from one school to the other would be bussed
- Bell times are earlier and only 15 mins apart so minimal impact on childcare arrangements
- Presently each school only has one bus with ride times of 45-50 mins.
- St Leo: 8:05/2:35 bell time with 45am/47pm riders and ride time of 46am/41pm mins
- St JP2: 8:20/2:50 bell time with 12am/12am riders and ride time of 52am/48pm mins





**DURHAM CATHOLIC  
DISTRICT SCHOOL BOARD**  
*Learning and Living in Faith*

# Future Meeting Content



**Rooted in Faith**  
Excellence | Equity | Engagement



**DURHAM CATHOLIC  
DISTRICT SCHOOL BOARD**  
*Learning and Living in Faith*

# Future Meeting Content

## Meeting 2:

- Accommodation Options

## Meeting 3:

- Recommendation(s)
- Implementation process



**Rooted in Faith**  
Excellence | Equity | Engagement



**DURHAM CATHOLIC  
DISTRICT SCHOOL BOARD**  
*Learning and Living in Faith*

# Child Minding

Meeting 2: April 2, 2020 @7:00 – 9:00 p.m.

- Register online on the Boundary Review website by March 20, 2020

Meeting 3: April 20, 2020 @7:00 – 9:00 p.m.

- Register online on the Boundary Review website by April 17, 2020

[www.dcdsb.ca/boundaryreviews](http://www.dcdsb.ca/boundaryreviews)



**Rooted in Faith**  
Excellence | Equity | Engagement



**DURHAM CATHOLIC  
DISTRICT SCHOOL BOARD**  
*Learning and Living in Faith*

# Questions and Discussion



**Rooted in Faith**  
Excellence | Equity | Engagement



# Questions & Discussion

**All questions and comments will be documented as part of the public record.**

- Please line up at the microphone at the front
- Introduce yourself and which school you are connected to
- We want to hear from as many parents as possible in the time we have
- If we cannot answer a question tonight, we will prepare a Frequently Asked Questions (FAQ) document, send it to all schools and post it to our website: [www.dcdsb.ca/boundaryreviews](http://www.dcdsb.ca/boundaryreviews)







**DURHAM CATHOLIC  
DISTRICT SCHOOL BOARD**  
*Learning and Living in Faith*

# Communication Protocol



**Rooted in Faith**  
Excellence | Equity | Engagement



**DURHAM CATHOLIC  
DISTRICT SCHOOL BOARD**  
*Learning and Living in Faith*

# Communication Protocol

## Dedicated phone line

(905) 576-6150 Ext. 42252

## Email address

[planning@dcdsb.ca](mailto:planning@dcdsb.ca)

- Phone line and email will be checked on a daily basis
- Questions will be documented and shared with committee and the Board through a Frequently Asked Questions (FAQ) sheet
- Committee members are asked to bring all questions and concerns back to the committee
- Regular updates will be made to the website

## Website

[www.dcdsb.ca/boundaryreviews](http://www.dcdsb.ca/boundaryreviews)



**Rooted in Faith**  
Excellence | Equity | Engagement



**DURHAM CATHOLIC  
DISTRICT SCHOOL BOARD**  
*Learning and Living in Faith*

# Closing Prayer



**Rooted in Faith**  
Excellence | Equity | Engagement



**DURHAM CATHOLIC  
DISTRICT SCHOOL BOARD**  
*Learning and Living in Faith*

# Thank You

Our Mission: We are called to celebrate and nurture the  
God-given talents of each student as we serve with  
excellence in the light of Christ.





**DURHAM CATHOLIC  
DISTRICT SCHOOL BOARD**  
*Learning and Living in Faith*

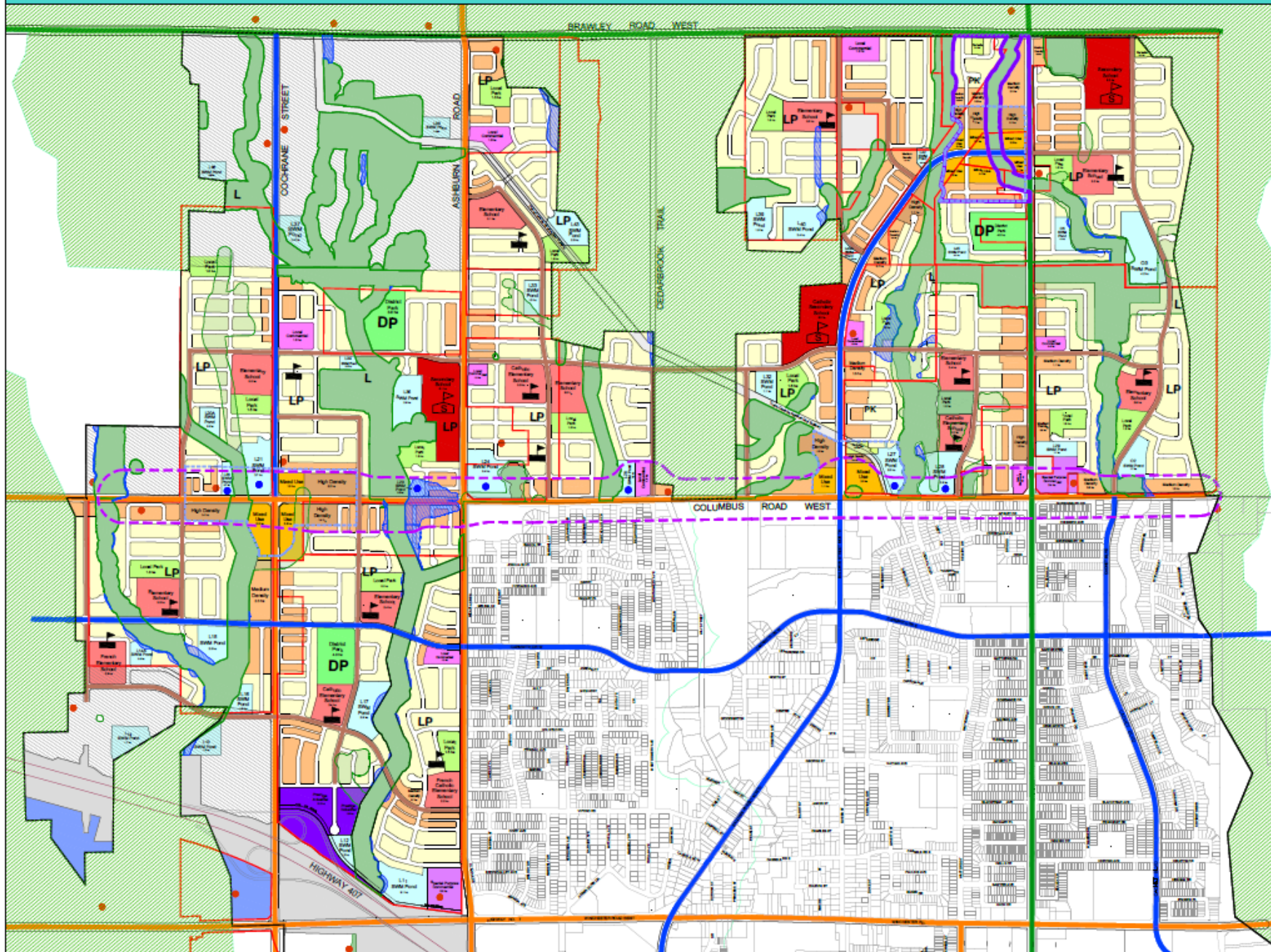
# Brooklin Community Plans



**Rooted in Faith**  
Excellence | Equity | Engagement



# COMPREHENSIVE BLOCK PLAN



- ### LAND USE LEGEND
- Low Density Residential
  - Medium Density Residential
  - High Density Residential
  - Mixed Use 1 Community
  - Secondary School (6.0 ha)
  - Elementary School (3.0 ha)
  - District Park (4.0 ha)
  - Local Park (1.5 ha)
  - Parkette (0.4 ha)
  - Local Commercial
  - Special Purpose Commercial
  - Prestige Industrial
  - General Employment
  - Utilities
  - Natural Heritage System
  - Schedule "K" Natural Heritage System Limits
  - Storm Water Management Ponds
  - Greenbelt
  - Deferred Areas
  - Schedule "K" Hazard Lands
  - Special Policy Area - Refer to Section 11.5.31.6 of the Brooklin Community Secondary Plan
  - Heritage House
  - SWM Ponds within Intensification Corridor
  - Landowner Properties
  - Community Central Area
  - Regional Intensification Corridor
  - Schedule "K" Elementary School
  - Schedule "K" Secondary School
  - Schedule "K" Linkage in NHS

- ### ROAD CLASSIFICATION LEGEND
- Type A Arterial Road (36m-45m)
  - Type B Arterial Road (30m-36m)
  - Type C Arterial Road (26m-30m)
  - 23m Collector Road
  - 18m Local Road (15m Window Roads)
  - 8.5m Laneway

Notes: This preliminary draft concept is high level and without prejudice. The final road network, land use pattern, and location of community / SWM facilities are subject to further review and will be determined through the Draft Plan of Subdivision process. SWM Ponds located within the Intensification Corridor are subject to Policy 11.5.6.5 of the Brooklin Secondary Plan. Best efforts shall be made through future study work (e.g. Functional Servicing Reports) to locate these facilities outside of the Intensification Corridor.

0 500m

Date: April 30, 2019

File No. 17-2667

Prepared by:

540 Redwine Drive, Suite 205 | Markham, ON  
L3R 4B3 | 905 513-0170 | mgp.ca