



WSP Canada Inc.  
ATTN: Marc St-Germain  
100 Commerce Valley Drive West  
Thornhill ON L3T 0A1

Date Received: 19-JUN-20  
Report Date: 29-JUN-20 10:21 (MT)  
Version: FINAL

Client Phone: 905-882-4211

## Certificate of Analysis

Lab Work Order #: L2463865  
Project P.O. #: 191-09337-01  
Job Reference: 500015601  
C of C Numbers:  
Legal Site Desc:

Candice Hunter  
Account Manager

[This report shall not be reproduced except in full without the written authority of the Laboratory.]

ADDRESS: 95 West Beaver Creek Road, Unit 1, Richmond Hill, ON L4B 1H2 Canada | Phone: +1 905 881 9887 | Fax: +1 905 881 8062  
ALS CANADA LTD Part of the ALS Group An ALS Limited Company



Environmental

# ANALYTICAL GUIDELINE REPORT

L2463865 CONTD....

Page 2 of 3

29-JUN-20 10:21 (MT)

500015601

Sample Details		Result	Qualifier	D.L.	Units	Analyzed	Guideline Limits			
Grouping	Analyte									
L2463865-1	~P1 ST. MARY-500015601-H134-BFF-S	<1.0		1.0	ug/L	25-JUN-20	#1	#2		
Sampled By:	D. BUCK on 18-JUN-20 @ 16:23						10			
Matrix:	PLUMBING									
Total Metals										
Lead (Pb)										
L2463865-2	~P2 ST. MARY-500015601-H134-BFF-F	<1.0		1.0	ug/L	25-JUN-20	#1	#2		
Sampled By:	D. BUCK on 18-JUN-20 @ 16:58						10			
Matrix:	PLUMBING									
Total Metals										
Lead (Pb)										

Reference Information

Methods Listed (if applicable):

ALS Test Code	Matrix	Test Description	Method Reference***
PB-ONT-DW-243-WT	Water	Lead (O.Reg 243/07)	EPA 200.8
TURB-MET-WT	Water	Turbidity on preserved metals sample	APHA 2130 B
Sample result is based on a comparison of the intensity of the light scattered by the sample under defined conditions with the intensity of light scattered by a standard reference suspension under the same conditions. Sample readings are obtained from a Nephelometer.			

\*\*\* ALS test methods may incorporate modifications from specified reference methods to improve performance.

Chain of Custody numbers:

The last two letters of the above test code(s) indicate the laboratory that performed analytical analysis for that test. Refer to the list below:

Laboratory Definition Code	Laboratory Location	Laboratory Definition Code	Laboratory Location
WT	ALS ENVIRONMENTAL - WATERLOO, ONTARIO, CANADA		

GLOSSARY OF REPORT TERMS

Surrogates are compounds that are similar in behaviour to target analyte(s), but that do not normally occur in environmental samples. For applicable tests, surrogates are added to samples prior to analysis as a check on recovery. In reports that display the D.L. column, laboratory objectives for surrogates are listed there.

mg/kg - milligrams per kilogram based on dry weight of sample

mg/kg ww<sub>t</sub> - milligrams per kilogram based on wet weight of sample

mg/kg lw<sub>t</sub> - milligrams per kilogram based on lipid-adjusted weight

mg/L - unit of concentration based on volume, parts per million.

< - Less than.

D.L. - The reporting limit.

N/A - Result not available. Refer to qualifier code and definition for explanation.

Test results reported relate only to the samples as received by the laboratory.

UNLESS OTHERWISE STATED, ALL SAMPLES WERE RECEIVED IN ACCEPTABLE CONDITION.

Analytical results in unsigned test reports with the DRAFT watermark are subject to change, pending final QC review.

Application of guidelines is provided "as is" without warranty of any kind, either expressed or implied, including, but not limited to, fitness for a particular purpose, or non-infringement. ALS assumes no responsibility for errors or omissions in the information. Guideline limits are not adjusted for the hardness, pH or temperature of the sample (the most conservative values are used). Measurement uncertainty is not applied to test results prior to comparison with specified criteria values.



## Quality Control Report

Workorder: L2463865

Report Date: 29-JUN-20

Page 1 of 2

Client: WSP Canada Inc.  
100 Commerce Valley Drive West  
Thornhill ON L3T 0A1

Contact: Marc St-Germain

Test	Matrix	Reference	Result	Qualifier	Units	RPD	Limit	Analyzed
PB-ONT-DW-243-WT		Water						
Batch	R5131864							
WG3348822-4	DUP	WG3348822-3						
Lead (Pb)		3.9	4.0		ug/L	3.5	20	25-JUN-20
WG3348822-2	LCS							
Lead (Pb)			93.9		%		70-130	25-JUN-20
WG3348822-1	MB							
Lead (Pb)			<1.0		ug/L		1	25-JUN-20
WG3348822-5	MS	WG3348822-3						
Lead (Pb)			89.9		%		70-130	25-JUN-20

# Quality Control Report

Workorder: L2463865

Report Date: 29-JUN-20

Client: WSP Canada Inc.  
100 Commerce Valley Drive West  
Thornhill ON L3T 0A1  
Contact: Marc St-Germain

Page 2 of 2

## Legend:

---

Limit	ALS Control Limit (Data Quality Objectives)
DUP	Duplicate
RPD	Relative Percent Difference
N/A	Not Available
LCS	Laboratory Control Sample
SRM	Standard Reference Material
MS	Matrix Spike
MSD	Matrix Spike Duplicate
ADE	Average Desorption Efficiency
MB	Method Blank
IRM	Internal Reference Material
CRM	Certified Reference Material
CCV	Continuing Calibration Verification
CVS	Calibration Verification Standard
LCSD	Laboratory Control Sample Duplicate

## Hold Time Exceedances:

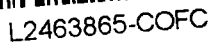
All test results reported with this submission were conducted within ALS recommended hold times.

ALS recommended hold times may vary by province. They are assigned to meet known provincial and/or federal government requirements. In the absence of regulatory hold times, ALS establishes recommendations based on guidelines published by the US EPA, APHA Standard Methods, or Environment Canada (where available). For more information, please contact ALS.

---

The ALS Quality Control Report is provided to ALS clients upon request. ALS includes comprehensive QC checks with every analysis to ensure our high standards of quality are met. Each QC result has a known or expected target value, which is compared against pre-determined data quality objectives to provide confidence in the accuracy of associated test results.

Please note that this report may contain QC results from anonymous Sample Duplicates and Matrix Spikes that do not originate from this Work Order.



Please place separate schools on a SEPARATE Chain of Custody

WT-FM-0275f v05 Reg 243/07 CoC  
Date: 28-Feb-15  
Page: 1 of 1